



叉车电器制造商
Professional&Reliable

PRODUCT BROCHURE



杭州丰乐电子科技有限公司
Hangzhou Fengle Electronic Technology Co., Ltd

www.Fengletech.com

Company Profile

企业介绍

杭州丰乐电子科技有限公司是一家集设计、研发、生产和销售于一体的国家高新技术企业，致力于为工程车辆及电子行业提供全面的产品与技术支持。公司以创新技术为核心驱动力，为客户打造高品质、可靠的定制化解决方案，是车用电子与综合解决方案的领导者。

核心业务范围：车用仪表与车用电器的设计、生产与销售；车身线束设计与生产；车辆控制系统研发；计算机技术研发与服务；安防监控产品与电子产品销售；机电产品销售及安装；货物及技术进出口。

公司重视人才战略，拥有强大的研发团队，在车辆电子、线束及控制系统领域，提供行业领先的技术解决方案。同时公司地理位置优越，服务链全面完善：覆盖设计、生产、销售到安装服务，满足客户的一站式需求。此外公司具有国际化视野，积极参与全球化业务，为国内外客户提供高质量产品及技术支持。作为行业内值得信赖的合作伙伴，杭州丰乐电子科技有限公司以客户需求为导向，坚持创新驱动与品质保障，为车辆及相关行业的发展贡献力量。欢迎与我们合作，共创未来！

Hangzhou Fengle Electronic Technology Co., Ltd. is a national high-tech enterprise integrating design, research and development, production and sales, committed to providing comprehensive product and technical support for engineering vehicles and electronics industry. With innovative technology as the core driving force, the company provides customers with high-quality and reliable customized solutions, and is a leader in automotive electronics and integrated solutions.

Core business scope: Design, production and sales of automotive instruments and electrical appliances; Body harness design and production; Vehicle control system research and development; Computer technology research and development and service; Security monitoring products and electronic products sales; Sales and installation of mechanical and electrical products; Import and export of goods and technology.

The company attaches great importance to talent strategy, has a strong R & D team, and provides industry-leading technical solutions in the field of vehicle electronics, wiring harness and control systems. At the same time, the company's geographical location is superior, and the service chain is comprehensive and perfect: covering design, production, sales and installation services to meet the one-stop needs of customers. In addition, the company has an international vision, actively participates in global business, and provides high-quality products and technical support for domestic and foreign customers. As a trusted partner in the industry, Hangzhou Fengle Electronic Technology Co., Ltd. is customer-oriented, adhere to innovation-driven and quality assurance, and contribute to the development of vehicles and related industries. Welcome to cooperate with us to create a better future!



Enterprise Honor

企业荣誉



高新技术企业
High-tech enterprise



ISO9001 认证
ISO9000 certificate



国家高新技术企业证书
High-tech enterprise



莱茵认证
TÜVRheinland



ISO9001 证书
ISO9000 certificate



浙江省科技型中小企业
Technology-based SME



公司拥有自主知识产权，已获专利证书 20+
Independent Intellectual Property, 20+ Patent Certificates

TABLE OF CONTENT

仪表
Display Screen 02

密码锁
COMBINATION LOCK Combination Lock 18

工程车辆灯具
LAMP 22

控制盒
CONTROL BOX 36

控制器
CONTROLLER 42

车用小电器
SMALL ELECTRICAL COMPONENTS 44

线束
WIRE HARNESS 52

势能驱动产品
POTENTIAL ENERGY DRIVE 54

| 仪表 DISPLAY SCREEN

YB1001仪表是一款基于CAN的车载仪表。屏幕显示车速、公里数、工时、电量、左右转向等丰富的车辆信息，采用屏幕触控操作，便于用户操作查看和设置参数，可视化程度高。

The YB1001 instrument is a CAN-based vehicle instrument. Screen display speed, kilometers, working hours, electricity, left and right steering and other rich vehicle information, the use of screen touch operation, easy for users to operate, view and set parameters, high degree of visualization.



YB1001仪表

型号 Model number	YB1001	
电压 Voltage	9~36V	
工作温度 Working Temp	-20°C~70°C	
接口型号 Interface type	DJ7208W-1.5-21;33472-2001	
屏幕: TFT彩屏 Screen: TFT color screen	屏幕尺寸: 7寸 Screen size: 7-inch	分辨率: 720*1280像素 Resolution: 720*1280pixel
防护等级: IP65 Protection class	通讯方式: CAN COM: CAN	尺寸: 118.6*206.1*54.4mm Product size

| 仪表 DISPLAY SCREEN

YB0110仪表是一款基于CAN的车载仪表。屏幕显示车速、工时、电量、转向、故障代码等丰富的车辆信息，采用按键操作，包含IC刷卡功能。

The YB0110 instrument is a CAN-based vehicle instrument. The screen displays rich vehicle information such as speed, working time, electricity, steering, fault code, etc., using key operation, including IC card swiping function.



YB0110仪表

型号 Model number	YB0110	
电压 Voltage	9~36V	
工作温度 Working Temp	-20°C~70°C	
接口型号 Interface type	6098-3572	
屏幕: TFT彩屏 Screen: TFT color screen	屏幕尺寸: 3.97寸 Screen size: 3.97-inch	分辨率: 800*480像素 Resolution: 800*480pixel
防护等级: IP65 Protection class	通讯方式: CAN COM: CAN	尺寸: 146*93*46mm Product size

| 仪表 DISPLAY SCREEN

YB1002仪表是一款基于双路独立CAN的车载仪表，总线可兼容多种控制器，支持控制器关键参数设置及监控，多路输入输出。屏幕显示小时计、电池电量、当前时间、故障查看、表盘车速、公里数、灯控等信息。支持横屏和竖屏显示，多语言菜单，满足不同国家需求。

The YB1002 instrument is a vehicle instrument based on dual independent CAN, the bus can be compatible with a variety of controllers, support controller key parameter setting and monitoring, multiple input and output. The screen displays the hour meter, battery level, current time, fault viewing, dial speed, kilometers, light control and other information. Support horizontal and vertical display, multi-language menu, to meet the needs of different countries.



YB1002仪表

型号 Model number	YB1002	
电压 Voltage	9~150V	
工作温度 Working Temp	-20°C~70°C	
接口型号 Interface type	3-1437290-7	
屏幕: TFT彩屏 Screen: TFT color screen	屏幕尺寸: 5寸 Screen size: 5-inch	分辨率: 800*480像素 Resolution: 800*480pixel
防护等级: IP65 Protection class	通讯方式: CAN COM: CAN	尺寸: 138*99*50mm Product size

| 仪表 DISPLAY SCREEN

YB1003仪表是一款基于CAN的车载仪表。屏幕显示货物重量、货叉倾斜角度、当前时间、故障警告、调节光亮度等丰富的车辆信息，采用屏幕触控操作，便于用户操作查看和设置参数，可视化程度高。

The instrument is a CAN-based vehicle instrument. The screen displays rich vehicle information such as cargo weight, fork tilt Angle, current time, fault warning, adjusting brightness, etc. The screen touch operation is convenient for users to view and set parameters, and the visualization degree is high.



YB1003称重仪表

型号 Model number	YB1003	
电压 Voltage	8~40V	
工作温度 Working Temp	-20°C~70°C	
接口型号 Interface type	3901-2160	
屏幕: TFT彩屏 Screen: TFT color screen	屏幕尺寸: 4.3寸 Screen size: 寸34.44.3-inch	分辨率: 800*480像素 Resolution: 800*480pixel
防护等级: IP65 Protection class	通讯方式: CAN COM: CAN	尺寸: 160.3*102.1*38.6mm Product size

| 仪表 DISPLAY SCREEN

这是5寸触摸屏仪表，屏幕实时显示行驶速度、工作模式（前进 / 后退、高低速）、电池电压 / 电量、货叉高度、载重、里程时间；同步显示电机故障码、低电量 / 超速报警及保养提醒，支持触摸切屏，5级背光可调节，进入高级设置可修改控制器参数。

its screen displays real-time speed, working modes (forward/backward, high/low speed), battery voltage/level, fork height, load, mileage & time; it also shows motor fault codes, low battery/overspeed alarms and maintenance reminders, with touch screen switching.5-level backlight adjustable; access advanced settings to modify controller parameters.



5寸触摸屏仪表 ZSCM16-030-FL

型号 Model number	ZSCM16-030-FL	
额定电压/工作电压 Rated Voltage/Voltage	80VDC	16VDC~120VDC
工作温度/储存温度 Working Temp/Storage Temp	-30°C~+70°C	-40°C~+80°C
总线接口 Bus Interface	符合CAN2.0B 标准规范	防护等级: IP65 Protection class
屏幕: 5寸TFT彩屏 Screen	屏幕点亮时间: ≤1.5s Screen Light-Up Time	分辨率: 800*480像素 Resolution

| 仪表 DISPLAY SCREEN

这是5寸触摸屏仪表，屏幕实时显示行驶速度、工作模式（前进 / 后退、高低速）、电池电压 / 电量、货叉高度、载重、里程时间；同步显示电机故障码、低电量 / 超速报警及保养提醒，支持触摸切屏，5级背光可调节，进入高级设置可修改控制器参数。

its screen displays real-time speed, working modes (forward/backward, high/low speed), battery voltage/level, fork height, load, mileage & time; it also shows motor fault codes, low battery/overspeed alarms and maintenance reminders, with touch screen switching.5-level backlight adjustable; access advanced settings to modify controller parameters.



5寸触摸屏仪表 5-inch Touchscreen Meter

名称 Name	5寸触摸屏仪表 5-inch Touchscreen Meter	
额定电压/工作电压 Rated Voltage/Voltage	80VDC	16VDC~120VDC
工作温度/储存温度 Working Temp/Storage Temp	-30°C~+70°C	-40°C~+80°C
总线接口 Bus Interface	符合CAN2.0B 标准规范	防护等级: IP65 Protection class
屏幕: 5寸TFT彩屏 Screen	屏幕点亮时间: ≤1.5s Screen Light-Up Time	分辨率: 800*480像素 Resolution

仪表 DISPLAY SCREEN

仪表为单片机控制的彩色液晶显示仪表，可通过CAN通讯显示部分车辆信息，支持触摸控制部分车辆功能；仪表工作电压为16V~120V，工作温度为-20℃~70℃；26芯防水接插件，防护等级：IP66；仪表抗扰性能满足ISO 7637-2:2011标准；仪表显示信息可按照客户要求定制开发；仪表适用于叉车、挖掘机、装载机仪表；提供安装支架，支持角度调节

The instrument is a color LCD display controlled by a microcontroller, capable of displaying vehicle information via CAN communication and supporting touch control for certain vehicle functions. Operating voltage: 16V~120V; Operating temperature: -20℃~70℃. Features a 26-pin waterproof connector with IP66 protection rating. Electromagnetic compatibility meets ISO 7637-2:2011 standard. Display content can be customized according to customer requirements. Compatible with forklifts, excavators, loaders, and other engineering vehicles. Mounting bracket included, supporting angle adjustment.



5寸触摸屏仪表（竖屏）

型号 Model number	YB1005	
电压 Voltage	16~120V	
工作温度 Working Temp	-20℃~70℃	
接口型号 Interface type	AMP 6473418-1	
屏幕: TFT彩屏 Screen: TFT color screen	屏幕尺寸: 5寸 Screen size: 寸34.44.3-inch	分辨率: 800*480像素 Resolution: 800*480pixel
防护等级: IP66 Protection class	通讯方式: CAN COM: CAN	尺寸: 90*135*30mm Product size

仪表 DISPLAY SCREEN PANEL

仪表为单片机控制的彩色液晶显示仪表，可通过CAN通讯显示部分车辆信息，支持触摸控制部分车辆功能；仪表工作电压为16V~120V，工作温度为-20℃~70℃；26芯防水接插件，防护等级：IP66；仪表抗扰性能满足ISO 7637-2:2011标准；仪表显示信息可按照客户要求定制开发；仪表适用于叉车、挖掘机、装载机仪表；提供安装支架，支持角度调节

The instrument is a color LCD display controlled by a microcontroller, capable of displaying vehicle information via CAN communication and supporting touch control for certain vehicle functions. Operating voltage: 16V~120V; Operating temperature: -20℃~70℃. Features a 26-pin waterproof connector with IP66 protection rating. Electromagnetic compatibility meets ISO 7637-2:2011 standard. Display content can be customized according to customer requirements. Compatible with forklifts, excavators, loaders, and other engineering vehicles. Mounting bracket included, supporting angle adjustment.



5寸触摸屏仪表（横屏）

型号 Model number	YB1005-1	
电压 Voltage	16~120V	
工作温度 Working Temp	-20℃~70℃	
接口型号 Interface type	AMP 6473418-1	
屏幕: TFT彩屏 Screen: TFT color screen	屏幕尺寸: 5寸 Screen size: 寸34.44.3-inch	分辨率: 800*480像素 Resolution: 800*480pixel
防护等级: IP66 Protection class	通讯方式: CAN COM: CAN	尺寸: 135*90*30mm Product size

| 仪表 DISPLAY SCREEN

YB0093仪表是一款基于CAN的车载仪表。含有十路报警指示灯，LED屏幕显示计时、水温、油量油温、发动机故障等信息，采用按键操作，包含蜂鸣报警功能。

The YB0093 instrument is a CAN-based vehicle instrument. Contains ten alarm indicator light, LED screen displays timing, water temperature, oil temperature, engine fault and other information, using key operation, including buzzer alarm function.



YB0093仪表

型号 Model number	YB0093	
电压 Voltage	9~36V	
工作温度 Working Temp	-20°C~70°C	
接口型号 Interface type	6098-3572	
防护等级: IP65 Protection class	通讯方式: CAN COM: CAN	尺寸: 146*93*46mm Product size

| 仪表 DISPLAY SCREEN

YB0083仪表是一款基于CAN的车载仪表。含有十三路报警指示灯，LED屏幕显示小时计、水温、油量、故障代码、保养提示等丰富的车辆信息，包含IC刷卡功能。

The YB0083 instrument is a CAN-based vehicle instrument. Contains 13 alarm lights, LED screen displays hours, water temperature, oil, fault code, maintenance tips and other rich vehicle information, including IC card function.



YB0083仪表

型号 Model number	YB0083	
电压 Voltage	9~36V	
工作温度 Working Temp	-20°C~70°C	
接口型号 Interface type	6098-3572	
防护等级: IP65 Protection class	通讯方式: CAN COM: CAN	尺寸: 212*77*54.3mm Product size

| 仪表 DISPLAY SCREEN

YB1004仪表是一款基于CAN的车载仪表。屏幕显示小时计、电池电量、表盘车速、公里数、转向等信息，采用按键操作，包含IC刷卡功能。

The YB1004 instrument is a CAN-based vehicle instrument. The screen displays the hour meter, battery level, dial speed, kilometers, steering and other information, using key operation, including IC card swiping function.



YB1004仪表

型号 Model number	YB1004	
电压 Voltage	9~36V	
工作温度 Working Temp	-20°C~70°C	
接口型号 Interface type	6098-3572	
屏幕: TFT彩屏 Screen: TFT color screen	屏幕尺寸: 2.8寸 Screen size: 2.8-inch	分辨率: 320*240像素 Resolution: 320*240pixel
防护等级: IP65 Protection class	通讯方式: CAN COM: CAN	尺寸: 213.5*76.4*50.9mm Product size

| 仪表 DISPLAY SCREEN

YB0124和YB0091仪表是基于CAN的车载仪表，包含IC刷卡功能，多语言菜单。YB0124仪表，屏幕显示小时计、电池电量、表盘车速等丰富的车辆信息，采用按键操作。YB0091仪表含有充电指示灯、预热指示灯、故障等十五路指示灯，屏幕显示小时计、水温、油量等信息。

The YB0124 and YB0091 meters are CAN-based in-car meters that include IC swipe functions, multilingual menus. YB0124 instrument, screen display hours meter, battery level, dial speed and other rich vehicle information, using button operation. YB0091 meter contains charging indicator, preheating indicator, fault and other fifteen indicators, the screen displays the hour meter, water temperature, oil and other information.



YB0124仪表



YB0091仪表

型号 Model number	YB0124	YB0091
电压 Voltage	9~32V	9~36V
防护等级 Protection class	IP65	IP54
接口型号 Interface type	AMP174979-2	DJ7091-3-10;DJ7131-3-10
屏幕: TFT彩屏 Screen: TFT color	屏幕尺寸: 2.8寸 Screen size: 34.42.8-inch	分辨率: 320*240像素 Resolution: 320*240pixel
工作温度: -20°C~70°C Working Temp	通讯方式: CAN COM: CAN	尺寸: 243.5*107.9*80.8mm Product size

|仪表 DISPLAY SCREEN

YB0097和YB0006仪表是基于CAN的车载仪表，含有充电指示灯、预热指示灯、故障等指示灯，显示小时计、水温、油量等信息，YB0097包含IC刷卡功能。

YB0097 and YB0006 instruments are vehicle instruments based on CAN, containing charging indicator, preheating indicator, fault indicator, display hour meter, water temperature, oil and other information, YB0097 includes IC card function.



YB0097仪表



YB0006仪表

型号 Model number	YB0097	YB0006
电压 Voltage	9~36V	9~36V
工作温度 Working Temp	-20°C~70°C	-20°C~70°C
接口型号 Interface type	DJ7091-3-10;DJ7131-3-10	DJ7162-2.2-11
防护等级: IP54 Protection class	通讯方式: CAN COM: CAN	尺寸: 243.5*107.9*80.8mm Product size

|仪表 DISPLAY SCREEN

YB0021和YB0028仪表是电子数字仪表。含有充电、机油压力、空档、空滤、预热、左右转向、油水分离指示灯及仪表照明灯，显示小时计、水温、油量等信息。

The YB0021 and YB0028 meters are electronic digital meters. Contains charging, oil pressure, neutral, air filter, preheating, left and right steering, oil-water separation indicator light and instrument light, display hour meter, water temperature, oil amount and other information.



YB0021仪表



YB0028仪表

型号 Model number	YB0021	YB0028
电压 Voltage	12V	12V
工作温度 Working Temp	-20°C~70°C	-20°C~70°C
接口型号 Interface type	DJ7177-3-10	DJ7177-3-10
屏幕: LCD Screen: LCD	防护等级: IP54 Protection class	尺寸: 243.5*107.9*80.8mm Product size

| 仪表 DISPLAY SCREEN

YB0175仪表是一款基于CAN的彩色液晶数字仪表。屏幕显示小时计、电池电量、水温、油量等丰富的车辆信息，通过按键切换显示。

YB0175 instrument is a color liquid crystal digital instrument based on CAN. The screen displays rich vehicle information such as hour meter, battery level, water temperature, and fuel level, which can be switched by pressing buttons.



YB0175仪表

型号 Model number	YB0175	
电压 Voltage	12~80V	
工作温度 Working Temp	-20°C~70°C	
接口型号 Interface type	AMP 770585-1;AMP 770581-1	
防护等级: IP65 Protection class	通讯方式: CAN COM: CAN	尺寸: 180*120*58.5mm Product size

| 仪表 DISPLAY SCREEN

YB0111电量表带有电量显示，小时计，充电显示。YB0096电量表显示电量、计时、故障、电压，左下角显示电压或故障码，右下角显示小时计或单体位置（过压、欠压、温度过高或温度过低）。

YB0111 electric meter with power display, hour meter, charging display. YB0096 meter displays power, timing, fault, voltage, lower left corner shows voltage or fault code, lower right corner shows hour meter or cell position (over voltage, under voltage, high temperature or low temperature).



YB0111电量表



YB0096电量表

型号 Model number	YB0111	YB0096
电压 Voltage	9~100V	24V/48V
屏幕 Screen	TFT彩屏	OLED
接口型号 Interface type	Molex39-01-2085	Molex39-01-2085; 39-01-2040
屏幕尺寸:1.54寸 Screen size: 1.54-inch	240*240PX	128*64PX
工作温度: -30°C~70°C Working Temp	防护等级: IP65 Protection class	尺寸: 57.5*57.5*63.33mm Product size

| 仪表 DISPLAY SCREEN

YB0094电量表带有电量显示（通过监测电池电压显示SOC电量）和小时计。YB0081电量表由一段10段三色数码管显示电量。

The YB0094 meter has a charge display (showing SOC charge by monitoring the battery voltage) and an hour meter. YB0081 meter by a 10-section three-color digital tube display electricity.



YB0094仪表



YB0081仪表

型号 Model number	YB0094	YB0081
电压 Voltage	9~100V	24V/48V
尺寸 Product size	57.5*57.5*63.33mm	52.8*30*23mm
接口型号 Interface type	Molex39-01-2085	3901-2041
防护等级: IP65 Protection class	工作温度: -30°C~70°C Working Temp	

| 密码锁 LOCK

丰乐车用蓝牙指纹锁可实现驾驶员的身份识别和管理。通过指纹智能终端采集储存指纹，进行开机/关机操作。此外手机蓝牙连接小程序，登录后可实现添加、修改人员权限，查询登录记录和校正系统时间等功能。

Fengle Bluetooth fingerprint lock can realize the driver's identification and management. Collect and store fingerprints through the fingerprint intelligent terminal, and start/shut down operations. In addition, the mobile phone Bluetooth connection small program, login can achieve the addition, modify the personnel rights, query the login record and correct the system time and other functions.



TSJ0021密码锁



TSJ0020密码锁

型号 Model number	TSJ0021	TSJ0020
电压 Voltage	8~40V	40~150V
接口型号 Interface type	Molex39-01-2085	Molex39-01-2085
储存温度: -40°C~85°C Storage Temp	工作温度: -30°C~70°C Working Temp	解锁方式: 指纹 Fingerprint unlock
防护等级: IP54 Protection class	通讯方式: CAN、蓝牙 COM: CAN Bluetooth	尺寸: 75*47.5*33.6mmmm Product size

|密码锁 LOCK

TSJ0001和TSJ0073密码锁通过录入ID卡、IC卡或者密码控制解锁，解锁后主机会接通继电器进行开机/关机操作，实现驾驶员的身份识别和管理。

TSJ0001 and TSJ0073 combination locks can be unlocked by inputting ID card, IC card or password control. After unlocking, the master will switch on the relay for startup/shutdown operation, realizing the identity recognition and management of the driver



TSJ0001IC刷卡器



TSJ0073ID密码锁

|密码锁 LOCK

TSJ0004和TSJ0064密码锁通过录入ID卡、IC卡或者密码控制解锁，解锁后主机会接通继电器进行开机/关机操作，实现驾驶员的身份识别和管理。

TSJ0004 and TSJ0064 combination locks can be unlocked by inputting ID card, IC card or password control. After unlocking, the master will switch on the relay for startup/shutdown operation, realizing the identity recognition and management of the driver



TSJ0004密码锁



TSJ0064密码锁

型号 Model number	TSJ0001	TSJ0073
电压 Voltage	9~60V	9~60V
通讯方式 COM	CAN	/
储存温度: -40°C~85°C Storage Temp	工作温度: -20°C~70°C Working Temp	解锁方式: 刷卡/密码 Card/Password unlock
防护等级: IP65 Protection class	尺寸: 70*110*28mmmm Product size	

型号 Model number	TSJ0004	TSJ0064
电压 Voltage	9~60V	9~60V
通讯方式 COM	CAN	/
储存温度: -40°C~85°C Storage Temp	工作温度: -20°C~70°C Working Temp	解锁方式: 刷卡/密码 Card/Password unlock
防护等级: IP65 Protection class	尺寸: 75*47.5*23mmmm Product size	

|组合大灯LAMP

DJ0198是一款集照明灯、转向灯、示宽灯为一体的多功能组合灯，能同时满足多种功能。产品光通量高、光性能稳定，结构简单便于安装。

DJ0198 is a combination of light, turn signal, width indicator as one of the multi-functional light, can meet a variety of functions at the same time. The product has high luminous flux, stable optical performance, simple structure and easy installation.



DJ0198组合大灯

型号 Model number	DJ0198	
电压 Voltage	12~24V	
功率 Power	15W	
防护等级 Protection class	IP65	
工作温度 Working Temp	-30°C~70°C	
光通亮: 1000LM lumens	安装尺寸: M10 Installation size	尺寸: 148.5*109.5*111.5mm Product size

|组合大灯LAMP

DJ0152和DJ0138是集照明灯、转向灯、示宽灯为一体的多功能组合灯，能同时满足多种功能。产品有多颗灯珠，亮度高，照明效果好，光性能稳定，结构简单便于安装。

DJ0152 and DJ0138 are multi-functional combination lights that integrate lighting, turn signal and width indicator, and can meet multiple functions at the same time. The product has a number of lamp beads, high brightness, good lighting effect, stable light performance, simple structure and easy installation.



DJ0152组合大灯



DJ0138组合大灯

型号 Model number	DJ0152		DJ0138	
电压&功率 Voltage&Power	9~32V	27W	9~36V	40W
防护等级&工作温度 Protection class&Working Temp	IP67	-30°C~70°C	IP65	-30°C~70°C
光通亮 lumens	1900LM		1200LM	
安装尺寸 Installation size	M10		M8	
尺寸 Product size	158*108.5*66mm		193*108.9*91.4mm	

|组合大灯LAMP

FLDJ-ZHD-004和FLDD-ZHD-005是集照明灯、转向灯、示宽灯为一体的多功能组合灯，能同时满足多种功能。产品有多颗灯珠，亮度高，照明效果好，光性能稳定，结构简单便于安装。

This lamp integrates lighting, turn signal, and position (width) functions into a single unit. It features multiple high-brightness LEDs, offering excellent illumination, stable photometric performance, and a simple structure for easy installation.



FLDJ-ZHD-004组合大灯



FLDD-ZHD-005组合大灯

|前大灯LAMP

FLDJ-6Z-004是LED-6灯珠前大灯，产品光通量高、光性能稳定，结构简单便于安装。此外产品广泛应用于叉车、铲车等工程机械车辆。

FLDJ-6Z-004 LED Headlamp (6-LED): This headlamp features six LED light sources, delivering high luminous flux and stable photometric performance. Its simple structure facilitates easy installation, making it widely applicable to forklifts and loaders.



FLDJ-6Z-004前大灯



FLDD-6Z前大灯

型号 Model number	FLDJ-ZHD-004	FLDD-ZHD-005
电压&功率 Voltage&Power	9-36V	9-36V
防护等级 Protection class	IP67	
工作温度 Working Temp	-30°C~70°C	
光通亮: 550/450LM lumens	安装尺寸: M8 Installation size	安装尺寸: M8 Installation size
尺寸: Product size	165*105*55mm	140*99*95mm

型号 Model number	FLDJ-6Z-004	FLDD-6Z
电压&功率 Voltage&Power	9-36V	
防护等级: Protection class	IP67	
工作温度: Working Temp	-30°C~70°C	
光通亮: 550LM lumens	安装尺寸: M12 Installation size	尺寸: 100*100*48mm Product size

|前大灯LAMP

DJ0003是LED-4灯珠前大灯，DJ0017是LED-6灯珠前大灯。产品光通量高、光性能稳定，结构简单便于安装。此外产品广泛应用于叉车、铲车等工程机械车辆。

DJ0003 is a 4 LED headlight and DJ0017 is a 6 LED headlight. The product has high luminous flux, stable optical performance, simple structure and easy installation. In addition, the products are widely used in forklifts, forklifts and other construction machinery vehicles.



DJ0003前大灯



DJ0017前大灯

型号 Model number	DJ0003		DJ0017	
电压&功率 Voltage&Power	9~36V	10W	9~36V	12W
防护等级&工作温度 Protection class&Working Temp	IP67	-30°C~70°C	IP67	-30°C~70°C
光通亮 lumens	800LM		1200LM	
安装尺寸 Installation size	M8		M8	
尺寸 Product size	100.5*93*49mm		94.6*91*66.5mm	

|前大灯LAMP

DJ0192是LED-6灯珠前大灯,DJ0015是LED-9灯珠前大灯。产品光通量高、光性能稳定，结构简单便于安装。此外产品广泛应用于叉车、铲车等工程机械车辆。

DJ0192 is a 6 LED headlight, and DJ0015 is a 9 LED headlight. The product has high luminous flux, stable optical performance, simple structure and easy installation. In addition, the products are widely used in forklifts, forklifts and other construction machinery vehicles.



DJ0192前大灯



DJ0015前大灯

型号 Model number	DJ0192		DJ0015	
电压&功率 Voltage&Power	9~32V	12W	9~36V	13W
防护等级&工作温度 Protection class&Working Temp	IP67	-30°C~70°C	IP67	-30°C~70°C
光通亮 lumens	1200LM		1200LM	
安装尺寸 Installation size	M10		M8	
尺寸 Product size	130.5*96*42mm		110*58mm	

|前大灯LAMP

DJ0011是LED-9灯珠前大灯,DJ0093是卤素前大灯。产品光通量高、光性能稳定,结构简单便于安装。此外产品广泛应用于叉车、铲车等工程机械车辆。

DJ0011 is a 9 LED headlamp and DJ0093 is a halide Lamp. The product has high luminous flux, stable optical performance, simple structure and easy installation. In addition, the products are widely used in forklifts, forklifts and other construction machinery vehicles.



DJ0011前大灯



DJ0093前大灯

型号 Model number	DJ0011		DJ0093	
电压&功率 Voltage&Power	9~36V	13W	12V	35W
防护等级&工作温度 Protection class&Working Temp	IP67	-30°C~70°C	IP67	-30°C~70°C
光通亮 lumens	1200LM		/	
安装尺寸 Installation size	M8		M6	
尺寸 Product size	110*110*55mm		116*105*70mm	

|安全警示灯LAMP

DJ0186是LED斜射式点状蓝光灯,DJ0179是LED-红光灯,为车辆操作提供可靠的视觉辅助。产品光通量高、光性能稳定,结构简单便于安装。

DJ0186 is an LED-blue light, and DJ0179 is an LED-red light, providing a reliable visual aid for vehicle operation. The product has high luminous flux, stable optical performance, simple structure and easy installation.



DJ0186蓝光灯



DJ0179红光灯

型号 Model number	DJ0186		DJ0179	
电压&功率 Voltage&Power	9~80V	5W	9~80V	5W
防护等级&工作温度 Protection class&Working Temp	IP67	-30°C~70°C	IP65	-30°C~80°C
安装尺寸 Installation size	M8		M6	
尺寸 Product size	79*76*61.5mm		72*73.5mm	

|安全警示灯LAMP

FLDJ-HGD-YZ是一款一字区域灯，产品有红光灯，蓝光灯。DJ0131是一款LED-2灯珠蓝光灯；为车辆操作提供可靠的视觉辅助。光性能稳定，结构简单便于安装。此外产品广泛应用于叉车、铲车等工程机械车辆。

FLDJ-HGD-YZ Linear Area Lamp: This is a linear area lamp available in red or blue light. It provides reliable visual assistance for vehicle operations with stable photometric performance and a simple structure for easy installation. It is widely used in engineering vehicles like forklifts and loaders.



DJ0131蓝光灯



FLDJ-HGD-YZ一字区域灯

型号 Model number	DJ0131		FLDJ-HGD-YZ	
电压&功率 Voltage&Power	9~80V	8W	9-80V	/
防护等级 Protection class	IP67		IP67	
工作温度 Working Temp	-30°C~70°C		-30~70°C	
安装尺寸 Installation size	M6		M6	
尺寸 Product size	98*62.5*73.5mm		62*53*55mm	

|安全警示灯LAMP

DJ0128和DJ0125是LED警示灯，有多种颜色。产品光通量高、光性能稳定，以500ms为周期闪烁，磁吸式结构便于安装。此外产品广泛应用于叉车、铲车等工程机械车辆。

DJ0128 and DJ0125 are LED warning lights in a variety of colors. The product has high luminous flux, stable optical performance, blinks at 500ms cycle, and the magnetic structure is easy to install. In addition, the products are widely used in forklifts, forklifts and other construction machinery vehicles.



DJ0128警示灯



DJ0125警示灯

型号 Model number	DJ0128		DJ0125	
电压&功率 Voltage&Power	9~80V	8W	9~80V	8W
防护等级 Protection class	IP65		IP65	
工作温度 Working Temp	-30°C~70°C		-30°C~70°C	
尺寸 Product size	95*103mm		95*132.7mm	

|安全警示灯LAMP

FLDD-SMJSD-001是双面警示灯，集转向灯、示宽灯为一体的信号灯。光性能稳定，结构简单便于安装。

此外产品广泛应用于叉车、铲车等工程机械车辆

FLDD-SMJSD-001 Double-Sided Warning Lamp: This double-sided warning lamp combines turn signal and position (width) functions. It provides stable photometric performance and is designed for easy installation. It is suitable for forklifts, loaders, and other engineering machinery.



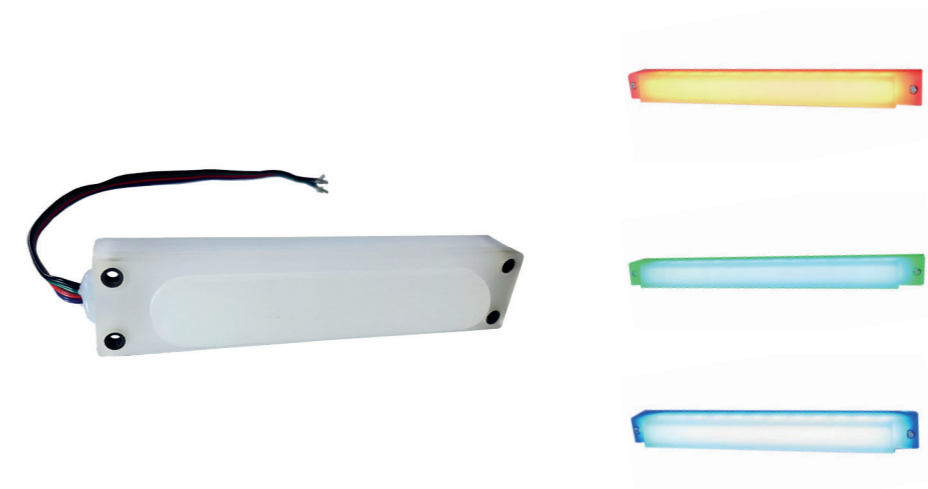
FLDD-SMJSD-001双面警示灯

型号 Model number	FLDD-SMJSD-001
电压&功率 Voltage&Power	12-24V
防护等级 Protection class	IP65
工作温度 Working Temp	-30°C~70°C
安装尺寸 Installation size	M12
尺寸 Product size	80*80*70mm

|安全警示灯LAMP

FLDJ-XTD-001是线条灯 有三色红绿蓝；外产品广泛应用于叉车、铲车等工程机械车辆。

FLDJ-XTD-001 Linear Lamp (RGB): This linear lamp can emit red, green, and blue light. It is widely used in engineering vehicles such as forklifts and loaders.



FLDJ-XTD-001线条灯

型号 Model number	FLDJ-XTD-001
电压&功率 Voltage&Power	12-24V
防护等级 Protection class	IP65
工作温度 Working Temp	-30°C~70°C
安装尺寸 Installation size	M4
尺寸 Product size	140*30*30mm

| 转向信号灯 LAMP

DJ0144是双面警示灯，DJ0132是集转向灯、示宽灯为一体的信号灯。产品光通量高、光性能稳定，结构简单便于安装。此外产品广泛应用于叉车、铲车等工程机械车辆。

DJ0144 is a double-sided warning light, and DJ0132 is a signal light that integrates the turn signal light and the width indicator light. The product has high luminous flux, stable optical performance, simple structure and easy installation. In addition, the products are widely used in forklifts, forklifts and other construction machinery vehicles.



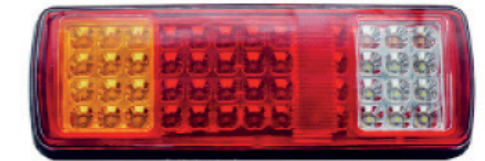
DJ0132信号灯

型号 Model number	DJ0132		
电压&功率 Voltage&Power	12-24V	5W	
防护等级&工作温度 Protection class&Working Temp	IP65	-30°C~70°C	
安装尺寸 Installation size	M4		
尺寸 Product size	100*49.6*24mm		

| 尾灯 LAMP

DJ0327和DJ0009是集倒车灯、刹车灯、转向灯、示宽灯为一体的三色尾灯。DJ0327造型美观，转向灯工作状态为流水形式，设计新颖。产品光通量高、光性能稳定，结构简单便于安装。此外产品广泛应用于叉车、铲车等工程机械车辆。

DJ0327 and DJ0009 are three-color taillights integrating reverse lights, brake lights, turn signals and width indicators. DJ0327 beautiful shape, turn signal working state for flowing water form, novel design. The product has high luminous flux, stable optical performance, simple structure and easy installation. In addition, the products are widely used in forklifts, forklifts and other construction machinery vehicles.



DJ0327尾灯

DJ0009尾灯

型号 Model number	DJ0327		DJ0009	
电压&功率 Voltage&Power	9~36V	16W	12~24V	12W
防护等级&工作温度 Protection class&Working Temp	IP65	-30°C~70°C	IP55	-30°C~70°C
安装尺寸 Installation size	M5		M6	
尺寸 Product size	279.3*64.9*33.8mm		280*97.5*35mm	

|尾灯LAMP

DJ0081和DJ0170是集倒车灯、刹车灯、转向灯、示宽灯为一体的三色尾灯。产品光通量高、光性能稳定，结构简单便于安装。此外产品广泛应用于叉车、铲车等工程机械车辆。

DJ0081 and DJ0170 are three-color taillights integrating reverse lights, brake lights, turn signals and width indicators. The product has high luminous flux, stable optical performance, simple structure and easy installation. In addition, the products are widely used in forklifts, forklifts and other construction machinery vehicles.



DJ0081三色尾灯



DJ0170三色尾灯

型号 Model number	DJ0081		DJ0170	
电压&功率 Voltage&Power	9~36V	6W	12-24V	12W
防护等级&工作温度 Protection class&Working Temp	IP65	-30°C~70°C	IP65	-30°C~70°C
安装尺寸 Installation size	M6		M6	
尺寸 Product size	220*55*27mm		252.8*55.8*57mm	

|控制盒CONTROL BOX

DQ0078等A系列控制盒是集成控制盒，主要功能包括：车辆启动控制、预热控制以及各功能电源控制。产品壳体强度高、具有阻燃性、安装便捷，适用于叉车、铲车等机械设备。

DQ0078 and other A series control box is an integrated control box, the main functions include: vehicle start control, preheating control and power control of each function. Product shell strength is high, flame retardant, easy to install, suitable for forklift, forklift and other mechanical equipment.



A系列控制盒

型号 Model number	DQ0078	
电压&电流 Voltage&Current	12V	70A
防护等级&工作温度 Protection class&Working Temp	IP55	-30°C~75°C
接口型号 Interface type Working Temp	DJ7025Y-7.8-21; DJ7021-9.6-21; DJ7103-2.8-21; DJ7063-2.8-21	
重量 Weight	602g	
尺寸 Product size	176*122*81.5mm	

|控制盒CONTROL BOX

DQ0091系列控制盒是变速控制盒，集成化程度高。产品满足基本控制功能，同时具有OPS控制逻辑，具有人员检测、安全带状态检测、手刹状态检测、自动熄火等多种功能。

DQ0091 series control box is a variable speed control box with high degree of integration. The product meets the basic control functions, and has OPS control logic, personnel detection, safety belt state detection, handbrake state detection, automatic flame out and other functions.



DQ0091变速控制盒

型号 Model number	DQ0078		
电压&电流 Voltage&Current	12V/24V	70A	
防护等级&工作温度 Protection class&Working Temp	IP55	-30°C~85°C	
接口型号 Interface type Working Temp	DJ70219Y-7.8-20; TE-770680-1		
重量 Weight	555g		
尺寸 Product size	158.8*145*58.6mm		

|控制盒CONTROL BOX

DQ0008和DQ0058系列控制盒是集成中央控制盒，主要功能包括：车辆启动控制、预热控制以及各功能电源控制。产品壳体强度高、具有阻燃性、安装便捷，适用于叉车、铲车等机械设备。

DQ0008 and DQ0058 series control boxes are integrated central control boxes, the main functions include: vehicle start control, preheating control and power control of each function. Product shell strength is high, flame retardant, easy to install, suitable for forklift, forklift and other mechanical equipment.



DQ0008中央控制盒



DQ0058中央控制盒

型号 Model number	DQ0008		DQ0058	
电压&电流 Voltage&Current	12V	70A	12V	70A
防护等级&工作温度 Protection class&Working Temp	IP55	-30°C~75°C	IP55	-30°C~75°C
接口型号 Interface type Working Temp	DJ70219Y-7.8-10; DJ7041Y-4.8-21 174982-2; 174352-2; 174259-2		DJ70219Y-7.8-10; 174657-2(AMP) DJ7091Y-2.3-10	
重量 Weight	707g		710g	
尺寸 Product size	180*112*67mm		180*134.85*64mm	

|控制盒CONTROL BOX

DQ0013和DQ0087系列控制盒是集成中央控制盒，主要功能包括：车辆启动控制、预热控制以及各功能电源控制。产品壳体强度高、具有阻燃性、安装便捷，适用于叉车、铲车等机械设备。

DQ0013 and DQ0087 series control boxes are integrated central control boxes, the main functions include: vehicle start control, preheating control and power control of each function. Product shell strength is high, flame retardant, easy to install, suitable for forklift, forklift and other mechanical equipment.



DQ0013中央控制盒



DQ0087中央控制盒

型号 Model number	DQ0013		DQ0087	
电压&电流 Voltage&Current	12V	70A	12V	70A
防护等级&工作温度 Protection class&Working Temp	IP55	-30°C~75°C	IP43	-30°C~75°C
接口型号 Interface type Working Temp	DJ7091Y-2.3-11; DJ7061Y-2.3-11 DJ7012Y-A7.8-11; DJ7012Y-W7.8-21		DJ7091Y-2.3-11; DJ7061Y-2.3-11 DJ7041Y-2.3-11	
重量 Weight	537g		/	
尺寸 Product size	165*105*55mm		117*65.3*79.5mm	

|控制盒CONTROL BOX

控制盒总成壳体强度高、具有阻燃性、安装便捷、性能优越；具有集成总线接口，可按照客户需求进行定制开发；适用于叉车、铲车、挖掘机等机械设备；

The control box assembly features high shell strength, flame retardancy, easy installation and superior performance. It is equipped with an integrated bus interface and can be customized and developed according to customer needs. It is suitable for mechanical equipment such as forklifts, loaders and excavators.



DQH-FL208控制盒



DQH-FL205控制盒

型号 Model number	DQH-FL208	DQH-FL205
工作电压 Voltage	12V	12V
耐盐雾试验 Salt spray resistance test	经过96小时，表面镀覆层无基体腐蚀	
防护等级 Protection class	IP56	IP65
工作温度 Working Temp	-30-85°C	-30-100°C
安装尺寸 Installation size	M6	M6
尺寸 Product size	152.45*100.2*60mm	124.5*111*42.8mm

| 控制器 CONTROLLER

控制器系列具有OPS控制功能，有手刹报警控制器、启动顺序控制器、称重控制器总成、感知系统控制器总成、叉车感知控制器等。可按照客户要求定制开发，适用于叉车、铲车等机械设备。

The controller series has OPS control function, including handbrake alarm controller, start sequence controller, weighing controller assembly, sensing system controller assembly, forklift sensing controller, etc. Can be customized according to customer requirements, suitable for forklifts, forklifts and other mechanical equipment.



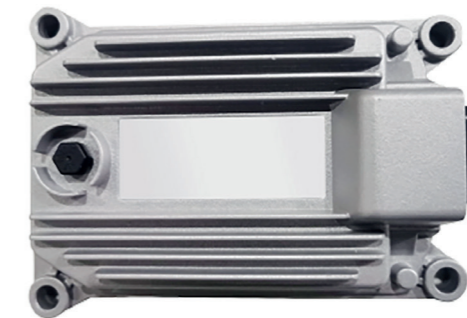
KZ0044控制器系列

型号 Model number	KZ0044	KZ0042
电压&电流 Voltage&Current	15~80V	9~36V
工作温度 Working Temp	-20°C~70°C	
防护等级 Protection class	IP65	
接口型号 Interface type	AMP6437288-2	
通讯方式: / COM: /	重量: 358g Weight	尺寸: 155*104*33mm Product size

| 控制器 CONTROLLER

主要用于车辆灯光的集中控制，采用嵌入式系统和CAN总线技术，通过接收VCU指令或者车辆开关信号，实现车辆灯具电源的开启和关闭控制，采用铸铝壳体，散热效率高；无触点功率器件输出，可靠性高，最多可控制车灯12路。可按照客户要求定制开发；

The controller series has OPS control function, including handbrake alarm controller, start sequence controller, weighing controller assembly, sensing system controller assembly, forklift sensing controller, etc. Can be customized according to customer requirements, suitable for forklifts, forklifts and other mechanical equipment.



KZ0043控制器系列

型号 Model number	KZ0043	KZ0045
电压&电流 Voltage&Current	15~80V	9~36V
工作温度 Working Temp	-20°C~70°C	
防护等级 Protection class	IP65	
接口型号 Interface type	AMP6437288-2	
通讯方式: / COM: /	重量: 358g Weight	尺寸: 155*104*33mm Product size

| 车用插座 VEHICLE SOCKET

欧标新能源叉车电源控制插座。

European Standard Power Control Socket for New Energy Forklifts.



FLDZ-WDKG-001多合一车用插座

型号 Model number	FLDZ-WDKG-001	
拔出力 Pull-out force	3N-50N	
耐盐雾试验 Salt spray resistance test	经过96小时，表面镀覆层无基体腐蚀	
工作温度：-40-80℃ Protection class	贮存温度：-40-85℃ Storage Temp	寿命：插头插拔次数>10000 Service life
安装尺寸 Installation size	M4	
尺寸 Product size	152.45*100.2*60mm	

| 多动液压阀控制微动开关

这是一款叉车用多动液压阀控制微动开关，通过机械触发精准控制液压阀，保障叉车液压系统动作灵敏可靠，实现液压操作的信号切换与精准控制。

This is a multi-motion hydraulic valve control micro switch for forklifts. It precisely controls the hydraulic valve through mechanical triggering, ensuring the sensitivity and reliability of the forklift's hydraulic system, and realizing signal switching and precise control of hydraulic operations.



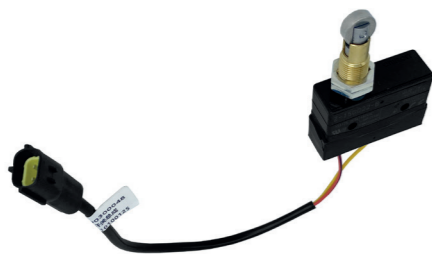
Z-15GW22-B多动液压阀控制微动开关

型号 Model number	Z-15GW22-B
动作力 Operating Force	OF最大 1.57N
回复力 Return Force	RF最小 0.14N
预行程 Pre-Travel	PT最小 0.4mm
过行程 Over-Travel	OT最小 2.4mm
应差距离 Differential Distance	MD最大 0.5mm
动作位置 Operating Position	OP 30.2 ± 0.4mm

| 多动液压阀控制微动开关

这是一款叉车用多动液压阀控制微动开关，通过机械触发精准控制液压阀，保障叉车液压系统动作灵敏可靠，实现液压操作的信号切换与精准控制。此外还有二联、三联和四联的多路阀微动开关。

This is a micro switch for multi-motion hydraulic valve control used in forklifts. It precisely controls the hydraulic valve through mechanical triggering, ensuring the sensitive and reliable operation of the forklift hydraulic system, and realizing signal switching and precise control of hydraulic operations. In addition, there are two - bank, three - bank and four - bank multi-way valve micro switches.



Z-15GQ22-B多动液压阀控制微动开关



Z-15GQ22-B 三联

| 夹紧放松手把

是操控叉车属具“夹紧”与“放松”动作的关键操作部件，通过手动操作可精准控制属具，保障货物夹持作业的便捷性与可靠性。

This is a clamp Lever for forklifts. It is a key operating component for controlling the "clamping" and "releasing" actions of forklift attachments. Manual operation allows for precise control of the attachments, ensuring the convenience and reliability of cargo clamping operations.



XF250-610021-520夹紧放松手把

型号 Model number	Z-15GQ22-B
动作力 Operating Force	OF最大 2.45~3.43N
回复力 Return Force	RF最小 1.12N
过行程 Over-Travel	OT最小 3.58mm
应差距离 Differential Distance	MD最大 0.5mm
至动作为止之移动 Pre-Travel	PT最大 0.4mm
动作位置 Operating Position	OP 33.4 ± 1.2mm

型号 Model number	XF250-610021-520
材质 Material	软质PVC/ABS
耐久寿命 Endurance Life	≥10年
工作温度 Working Temp	-30°C~+70°C
防护等级 Protection class	IP65
信号类型与输出 Signal Type and Output	CAN

| 霍尔速度传感器 HALL SPEED SENSOR

基于霍尔效应监测叉车电机/车轮转速，输出脉冲信号至控制系统，实现调速与超速预警，非接触设计适配恶劣工况，高精度且寿命长。

Based on Hall effect, it monitors forklift motor/wheel speed, outputs pulse signals to the control system for speed regulation and overspeed warning. Non-contact design adapts to harsh conditions, with high precision and long service life.



ZSCM16-030-FL 霍尔速度传感器

型号 Model number	ZSCM16-030-FL	
材质 Material	黄铜H59	
工作电压/额定电压 Voltage/Rated Voltage	9-30V	DC24V
工作温度/防护等级 Working Temp/Protection class	-30°C~130°C	IP67
感应距离 Sensing Distance	0.5-3mm	
引线长度 Lead Wire Length	350mm	
螺距 Pitch	1.5mm	

| 报警器 ALARM

超速报警器实时监测叉车速度，超预设阈值即触发声光报警，预防超速作业事故；语音报警器可定制语音内容，通过解析接收的 CAN 信号输出对应语音，强化人员警示，降低作业风险。

The overspeed alarm monitors the forklift's traveling speed in real time. It triggers an acoustic-optical alarm once the speed exceeds the preset threshold, preventing overspeed-related operational accidents.

The voice alarm supports customizable voice content. By parsing the received CAN signals, it outputs corresponding voice prompts to enhance personnel warning and reduce operational risks.



FLDZCSBJQDY-001 超速报警器



FLDZ-VA-NL002 语音报警器

型号 Model number	FLDZCSBJQDY-001	FLDZ-VA-NL002
材质 Material	铝壳黑色	ABS塑料
工作电压 Voltage	DC8V~35V	DC10V~40V
工作温度 Working Temp	-30°C~+70°C	-30°C~+80°C
储存温度 Storage Temp	-40°C~+80°C	通讯方式 CAN
防护等级 Protection class	IP65	/
尺寸 Product size	88*66*27mm	72.5*21mm

| 报警器 ALARM

在倒车、转弯等工况下发出响亮警示音，提醒周边人员注意，避免碰撞。壳体坚固，适配叉车振动、油污的作业环境，保障警示效果与耐用性。

It emits loud warning sounds during reversing, turning and other working conditions to alert surrounding personnel and avoid collisions. With a robust shell, it is suitable for the vibrating and oily operating environment of forklifts, ensuring warning effectiveness and durability.



喇叭 Horn



语音喇叭 Voice Horn

| 蜂鸣器 BUZZER

这是蜂鸣器，在叉车出现故障、报警等异常工况时，发出清晰蜂鸣音提示，结构紧凑，适配叉车电气环境，助力作业安全警示。

This is a buzzer for forklifts. It emits a clear buzzing sound to prompt when the forklift is in abnormal conditions such as faults or alarms. It has a compact structure, is suitable for the forklift's electrical environment, and helps with safety warnings during operations.



Buzzer 蜂鸣器

名称 Name	喇叭 Horn	语音喇叭 Voice Horn
工作电压 Voltage	DC 10--15V	DC 24V
工作电流 Operating Current	4.5A (MAX)	-35°C~+75°C
工作温度 Working Temp	-40°C---80°C	功率: 35W
基本频率 Frequency	430±20Hz	/
声级 Sound Level	105-118dB	≥110dB
耐久寿命 Endurance Life	≥10万次	/

名称 Name	蜂鸣器 Buzzer
材质 Material	ABS
工作电压 Voltage	DC 12V
工作电流 Operating Current	< 60mA
最高声压 Max Sound Pressure	> 90dB
防护等级 Protection class	IP65
安装尺寸 Installation size	M6

| 线束 WIRE HARNESS

线束主要应用于各种叉车、挖掘工程车、新能源汽车等，可按照客户要求定制开发。

Wiring harness is mainly used in various forklifts, excavation trucks, new energy vehicles, etc., can be customized according to customer requirements.



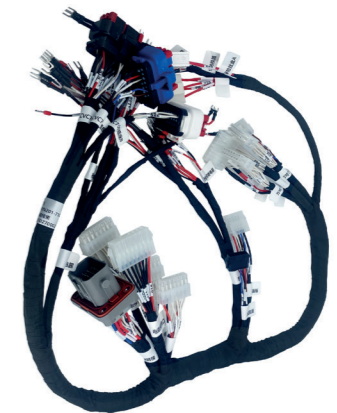
内燃整车控制线束
Diesel Wire Harness



锂电整车控制线束
Lithium Tram Harness



AGV智能线束
AGV Intelligent Wiring Harness



AGV智能线束
AGV Intelligent Wiring Harness



小金刚电车线束
Pallet Truck Harness 3



站立式托盘车线束
Pallet Truck Harness 2



2吨托盘车线束
Pallet Truck Harness 1



油泵电机线缆
Oil Pump Motor Cable



科聪手操器插座线总成
Kecong HC Socket Cable Assy

| 线束 WIRE HARNESS

线束主要应用于各种叉车、挖掘工程车、新能源汽车等，可按照客户要求定制开发。

Wiring harness is mainly used in various forklifts, excavation trucks, new energy vehicles, etc., can be customized according to customer requirements.

| 线束 WIRE HARNESS

线束主要应用于各种叉车、挖掘工程车、新能源汽车等，可按照客户要求定制开发。

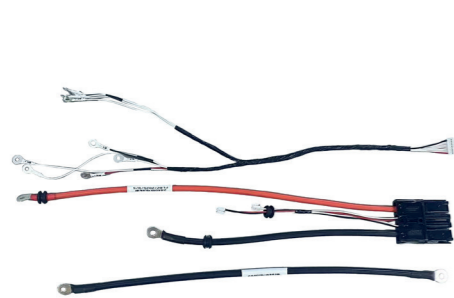
Wiring harness is mainly used in various forklifts, excavation trucks, new energy vehicles, etc., can be customized according to customer requirements.



输入电缆总成
Input Cable Assembly



锂电放电电缆束/充电线束
Lithium Battery Discharge Har-
ness / Charging Harness



采样/放电/电池转接线束
Sampling / Discharge / Battery
Transfer Harness



输出电缆总成
Output Cable Assembly

| 势能驱动 POTENTIAL ENERGY DRIVE

轮毂电机是叉车的动力驱动核心部件，可直接为叉车提供驱动力，实现行驶、转向等动作，助力叉车灵活高效完成货物搬运等作业。

The Hub Motor is the core power drive component of the forklift. It directly provides the driving force for the forklift, enabling movements such as travel and steering, thereby assisting the forklift in performing material handling and other tasks with flexibility and high efficiency.



WW77-FL-R57.000 轮毂电机



WW78-FL-R57.000 轮毂电机

型号 Model number	WW77-FL-R57.000		WW78-FL-R57.000	
电压&电流 Voltage&Current	DC024V	13.2A	DC024V	13.2A
额定功率 Rated Power	246W		246W	
额定转速 Rated Speed	938rpm		938rpm	
额定转矩 Rated Torque	2.5N.m		2.5N.m	
空载电流 No-load Current	≤1A		≤1A	
空载转速 No-load Speed	1150rpm		1150rpm	

| 势能驱动 POTENTIAL ENERGY DRIVE

W75 - 2T和W60 - 1.5T驱动轮作为叉车动力传动系统的关键零部件，可输出驱动力，保障叉车平稳运行，助力叉车高效完成各类搬运等作业任务。

The W75 - 2T and W60 - 1.5T Driving Wheels are key components of the forklift's power transmission system. They output driving force to ensure the smooth operation of the forklift, assisting in the efficient completion of various material handling and operational tasks. .



W75 - 2T 驱动轮



W60 - 1.5T驱动轮

型号 Model number	W75 - 2T	W60 - 1.5T
额定工作电压 Rated Op. Voltage	DC024V	DC024V
额定输出功率 Rated Output Pwr	246W	246W
额定转速 Rated Speed	938rpm	938rpm
最大输出扭矩 Max. Output Torque	8N.m	8N.m
空载电流 No-load Current	≤1A	≤1A
空载转速 No-load Speed	1150rpm	1150rpm

| 势能驱动 POTENTIAL ENERGY DRIVE

3KW 油泵动力总成是叉车的核心动力装置，能为叉车液压系统提供充足动力，助力叉车顺畅完成货物的搬运、堆垛等作业，保障作业高效开展。

3KW Electric Oil Pump Powertrain is the core power unit of a forklift. It provides sufficient power for the forklift's hydraulic system, facilitating smooth cargo handling and stacking operations, thereby ensuring efficient workflow.



3KW油泵动力总成

电动油泵动力总成是叉车的关键动力组件，以电动装置驱动液压系统，精准控制叉车起升、下降、倾斜等动作，为货物搬运、堆垛等作业提供稳定强劲动力，提升叉车作业效率与稳定性。

The Electric Oil Pump Powertrain is a critical power component in forklifts. It utilizes an electric device to drive the hydraulic system, enabling precise control over lifting, lowering, and tilting operations. This system provides stable and powerful power for cargo handling and stacking tasks, thereby enhancing the operational efficiency and stability of the forklift.

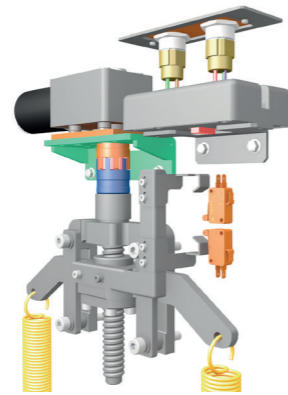


800W电动油泵动力总成

| 势能驱动 POTENTIAL ENERGY DRIVE

电动减震悬浮踏板，依靠电动装置和弹簧等部件，能智能调节减震效果，为叉车作业带来平稳舒适的踩踏体验，助力叉车更高效、稳定地开展搬运等工作。

The Electrically Damped Suspension Pedal utilizes an electric device and components such as springs to intelligently adjust the damping effect. It provides a smooth and comfortable pedaling experience for forklift operations, aiding in more efficient and stable material handling work.



SAIPD230-409000-A00电动减震悬浮踏板

电动油泵动力总成是叉车的关键动力组件，以电动装置驱动液压系统，精准控制叉车起升、下降、倾斜等动作，为货物搬运、堆垛等作业提供稳定强劲动力，提升叉车作业效率与稳定性。

The Electric Oil Pump Powertrain is a key power component in forklifts. It utilizes an electric device to drive the hydraulic system, enabling precise control over lifting, lowering, and tilting movements. This system delivers stable and robust power for cargo handling and stacking tasks, enhancing the operational efficiency and stability of the forklift.



A3000W-1电动油泵动力总成




A3000W-2电动油泵动力总成

| 合作客户 PARTNER



NOBLELIFT 诺力





车用电子与综合解决方案的领导者

LEADER IN AUTOMOTIVE ELECTRONICS AND INTEGRATION SOLUTIONS

杭州丰乐电子科技有限公司

Hangzhou Fengle Electronic Technology Co., Ltd

地址：浙江省杭州市临安区青山湖街道创业街88号

88 Chuangye Street, Qingshanhu Street, Lin 'an District,
Hangzhou City, Zhejiang Province

联系方式 (Tel) : 0571-61097556

手机 (MB) : 15067105688

邮箱 (E-mail) : fldz@fengletech.com

网址 (Web) : www.Fengletech.com